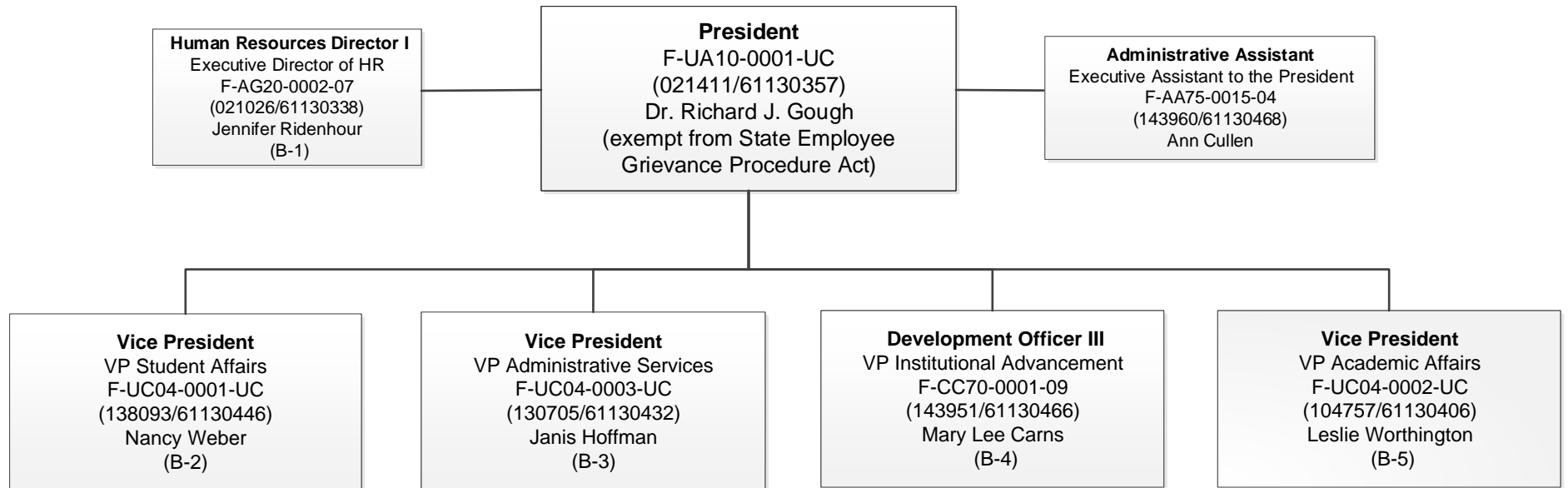


TECHNICAL COLLEGE OF THE LOWCOUNTRY (A-1)

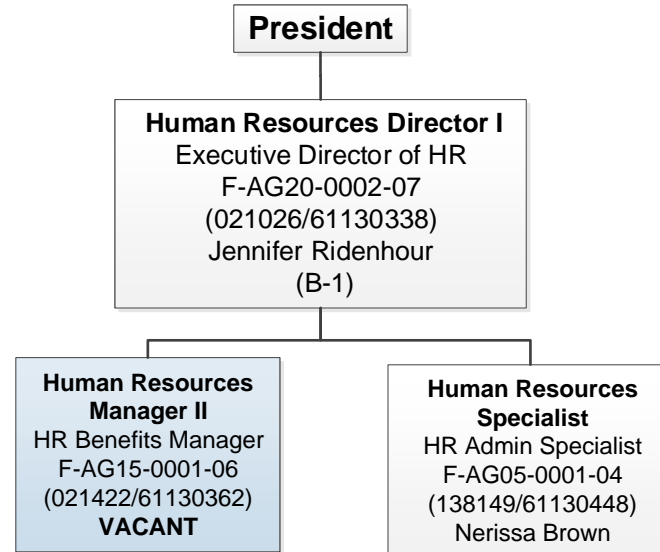
TCL Commission Representatives from Beaufort/
Colleton/Hampton/Jasper Counties



*Positions are filled unless noted on all slides

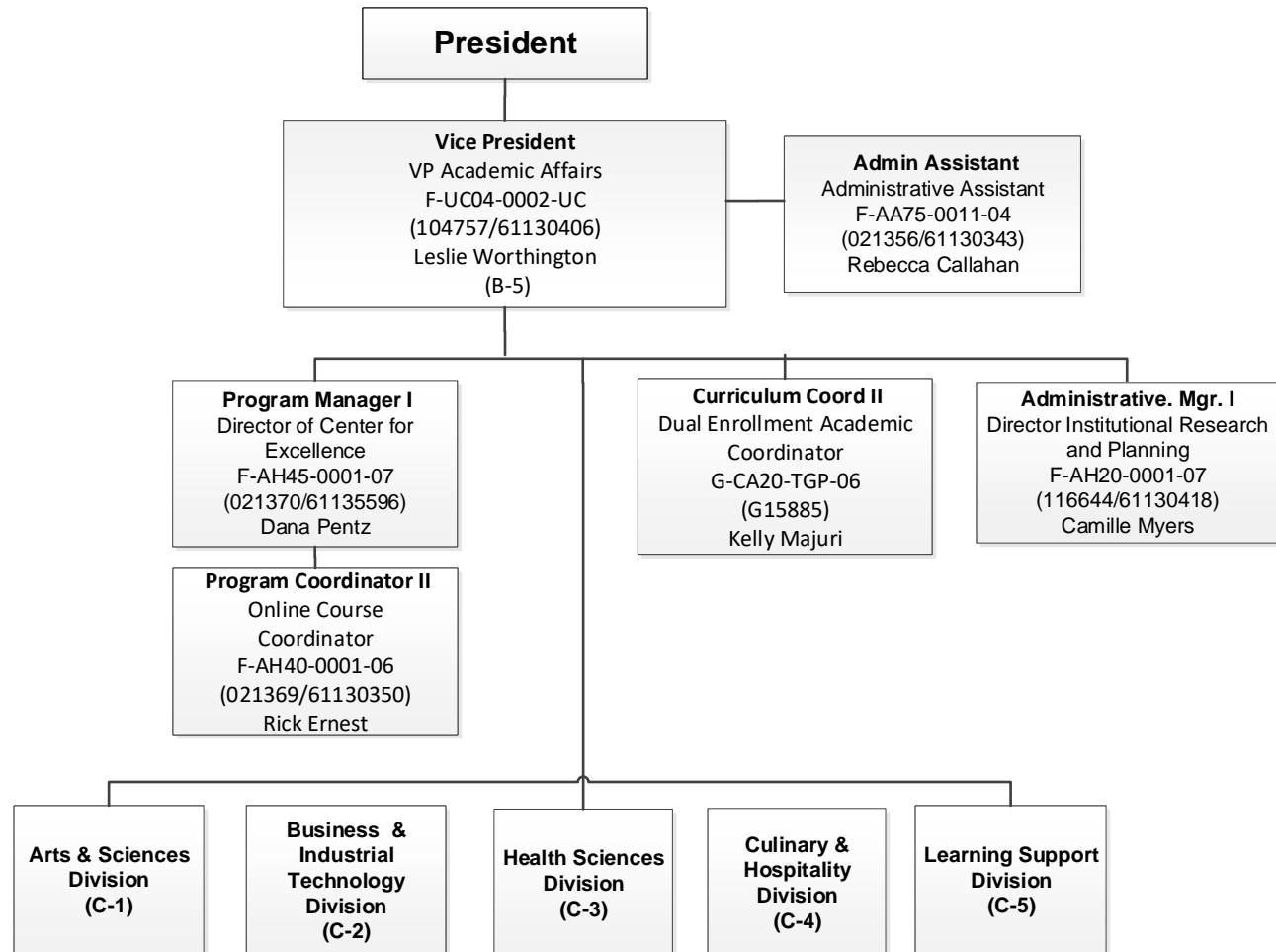
Updated 8/29/2022

**TECHNICAL COLLEGE OF THE LOWCOUNTRY
Human Resources Division
(B-1)**

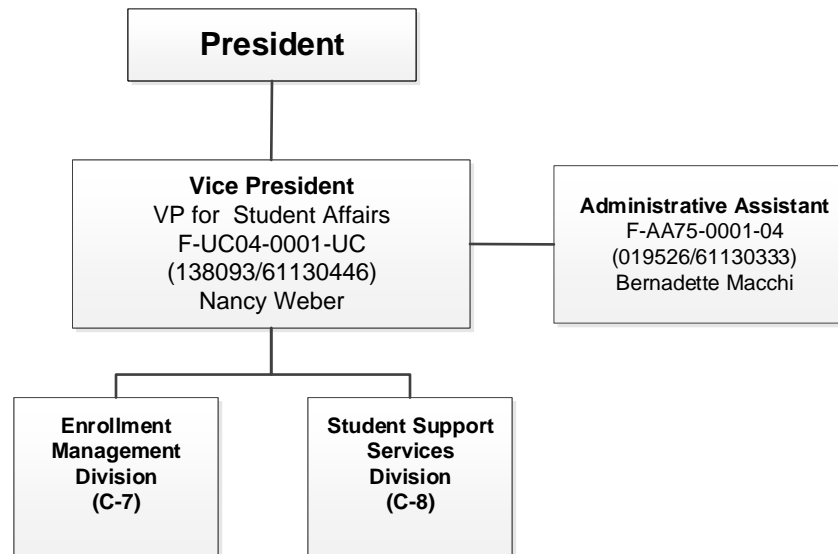


*Positions are filled unless noted on all slides

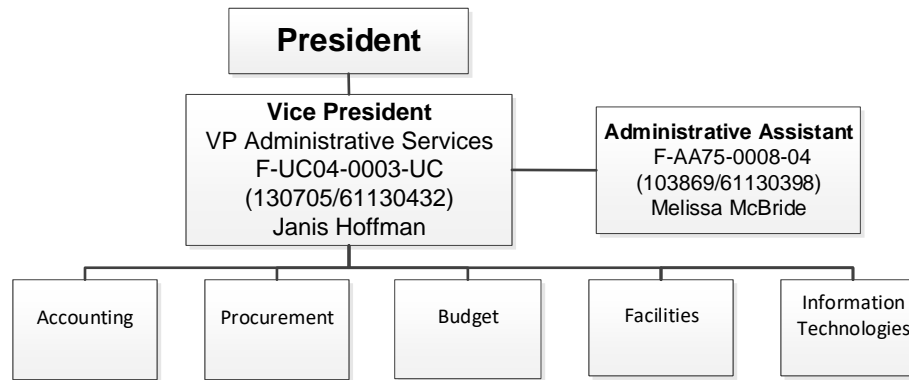
TECHNICAL COLLEGE OF THE LOWCOUNTRY
Academic Affairs Division
(B-1)



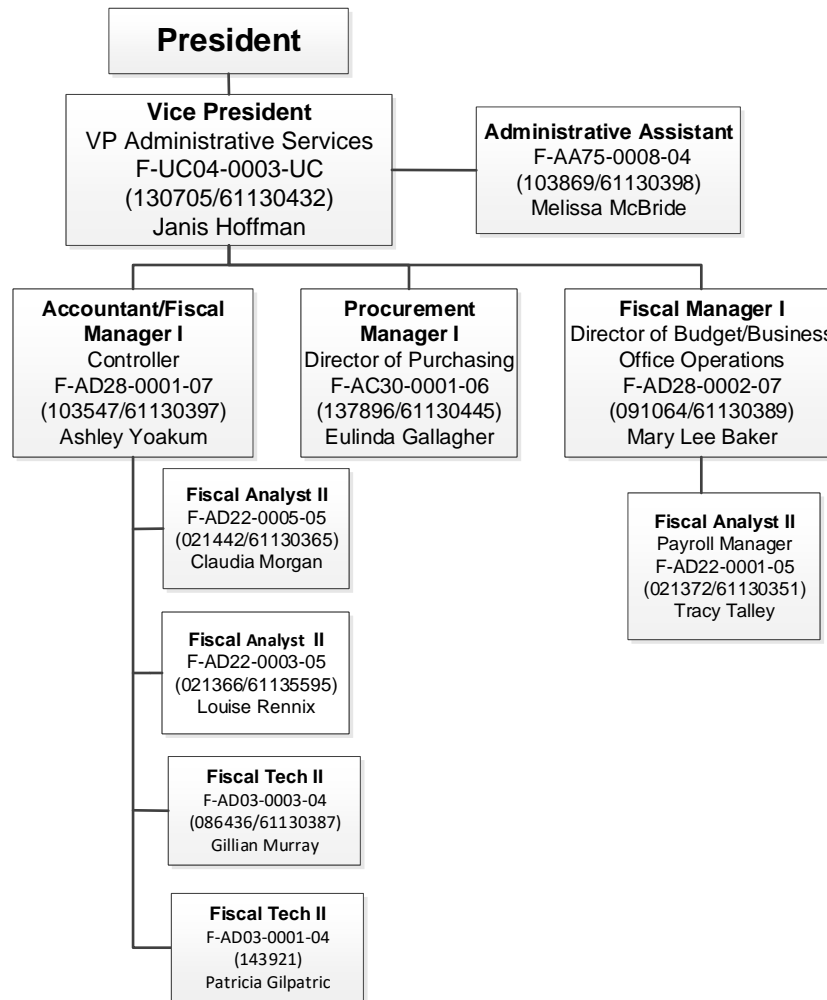
TECHNICAL COLLEGE OF THE LOWCOUNTRY
Student Affairs Division
(B-1)



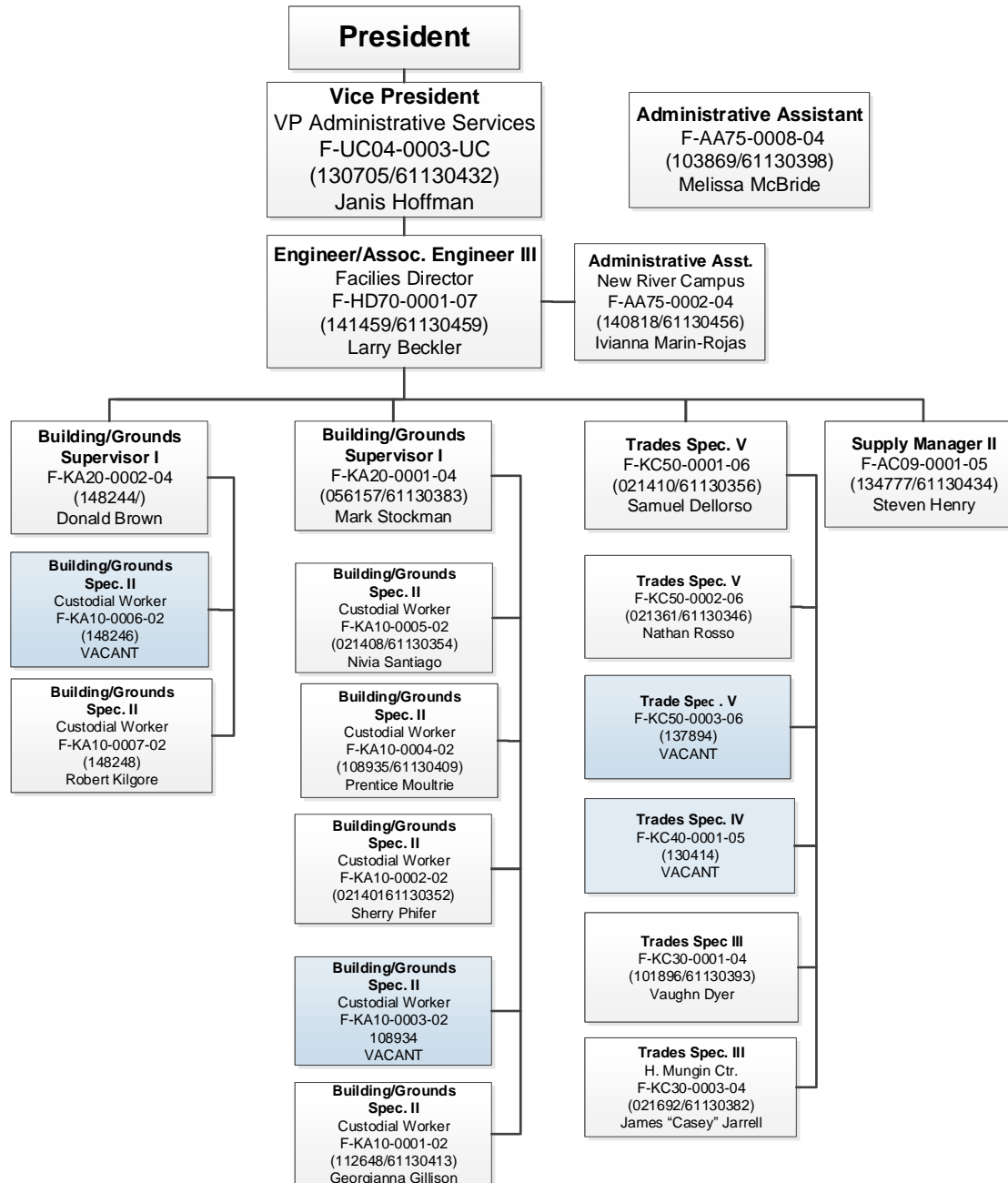
TECHNICAL COLLEGE OF THE LOWCOUNTRY
Administrative Services Division
(B-3)



TECHNICAL COLLEGE OF THE LOWCOUNTRY
Administrative Services Division
(B-3)

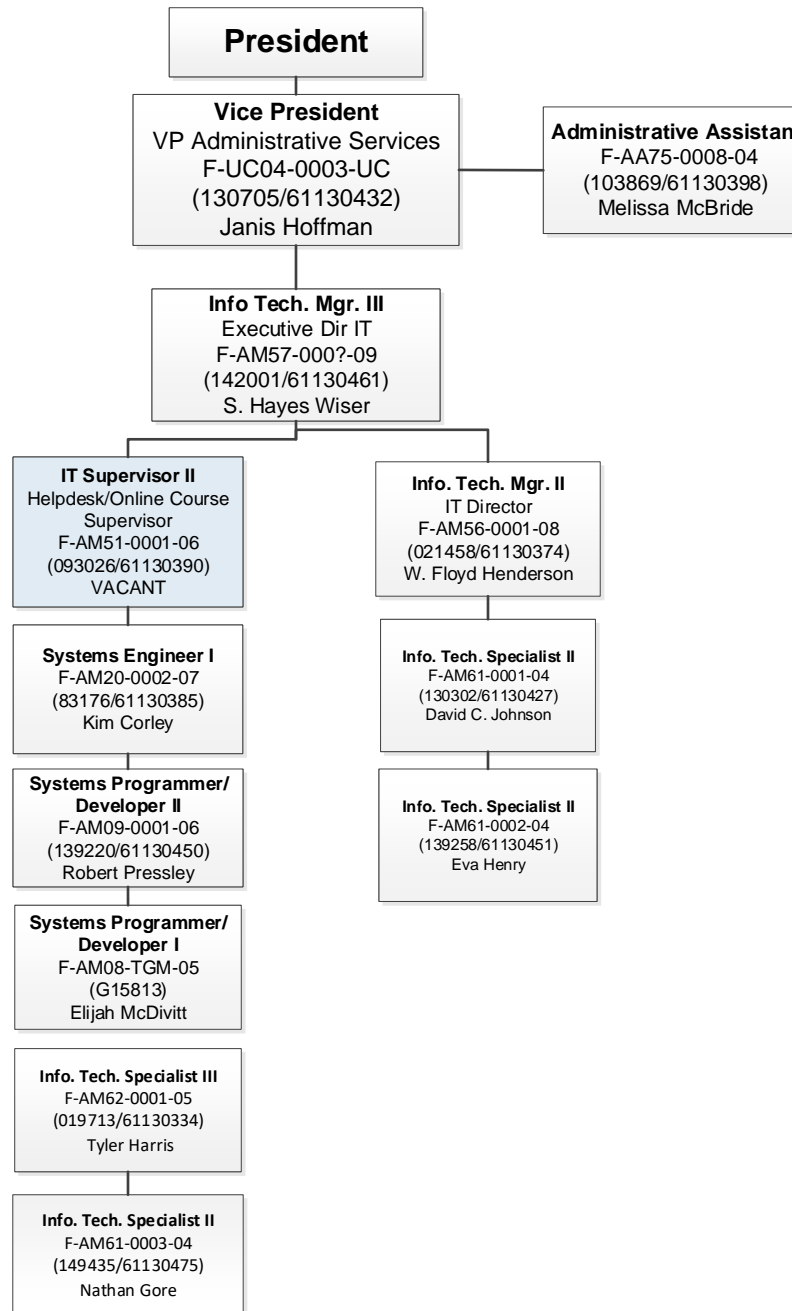


TECHNICAL COLLEGE OF THE LOWCOUNTRY
Administrative Services Division
(B-3)



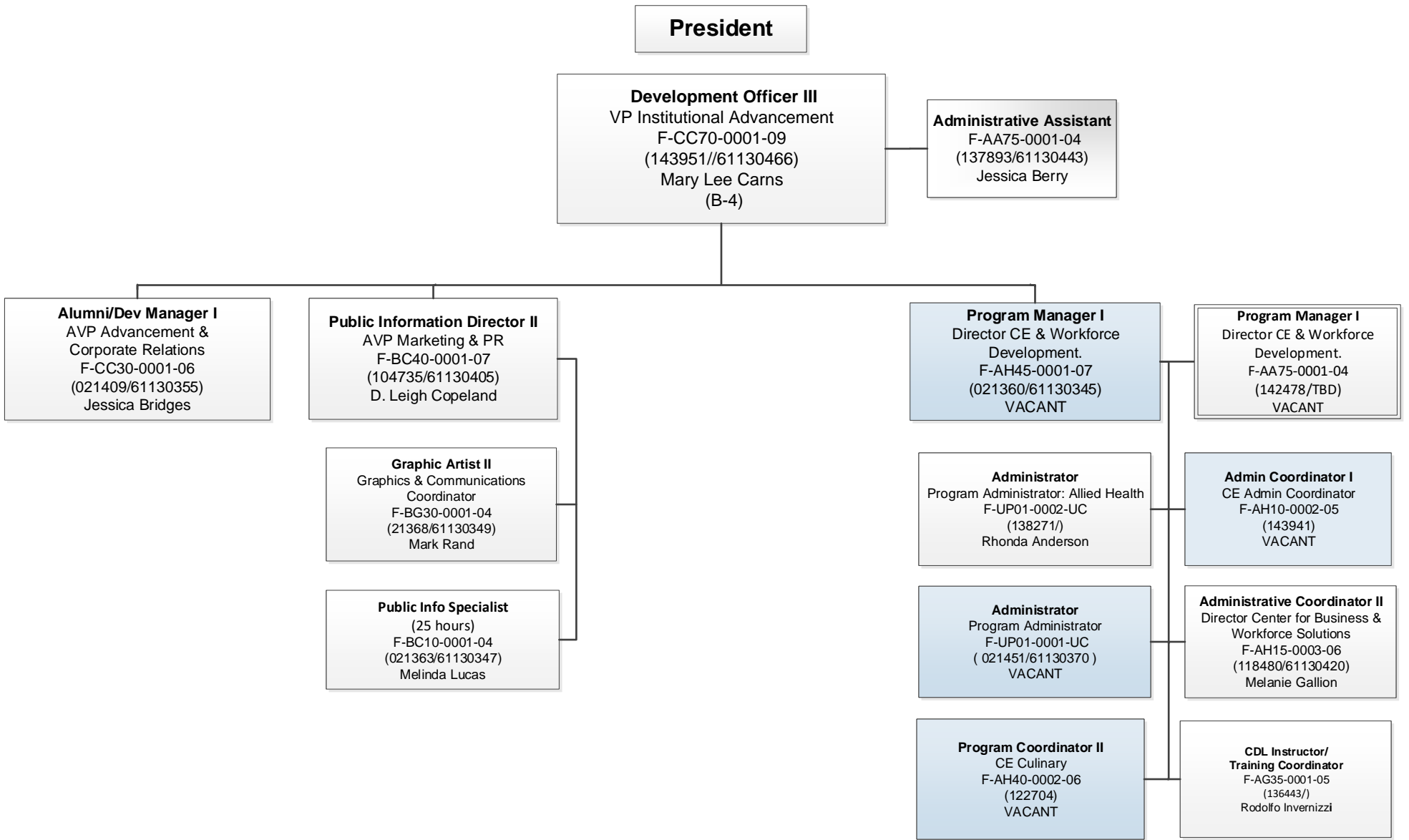
*Positions are filled unless noted on all slides

TECHNICAL COLLEGE OF THE LOWCOUNTRY
Administrative Services Division
(B-3)

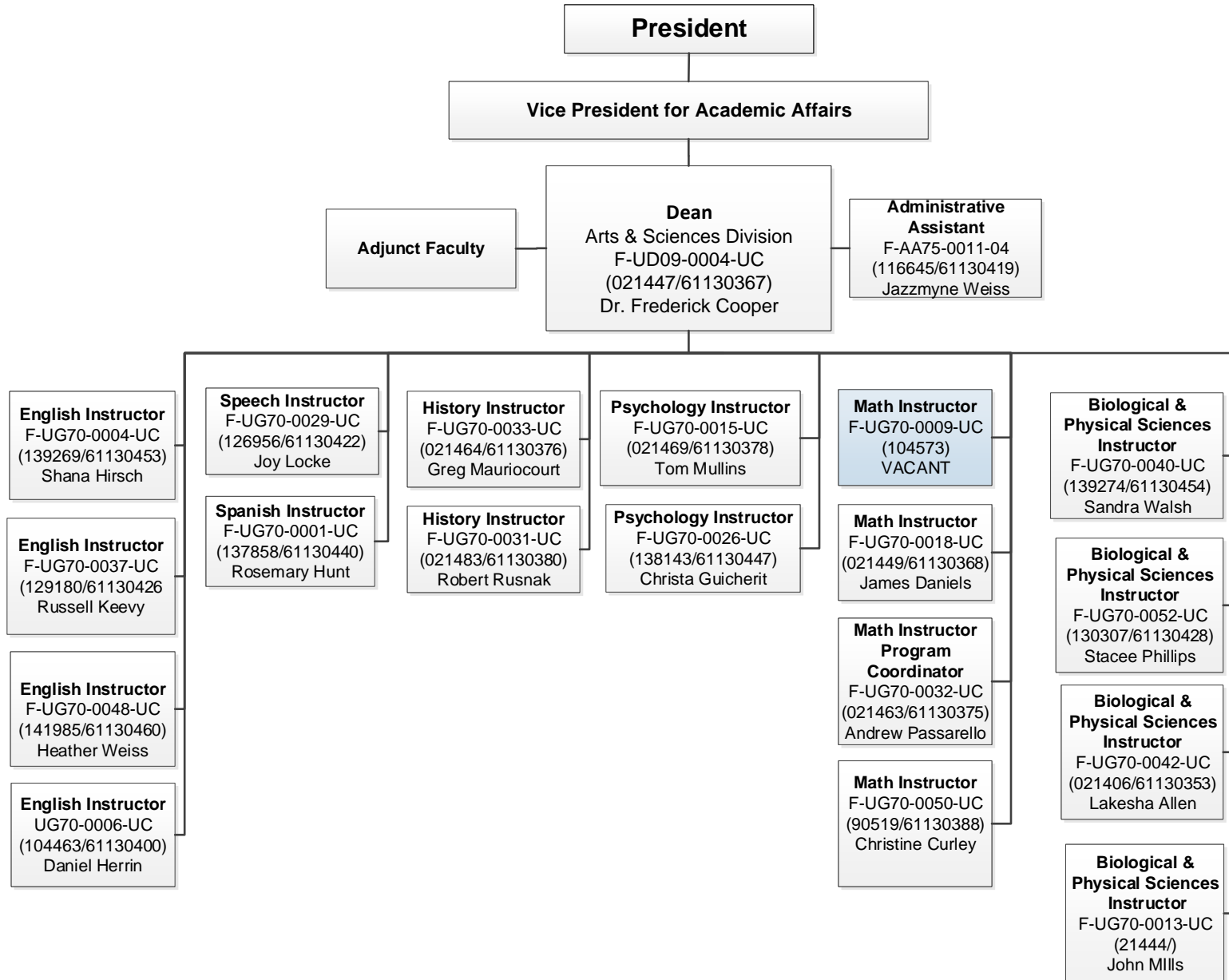


*Positions are filled unless noted on all slides

TECHNICAL COLLEGE OF THE LOWCOUNTRY
Institutional Advancement Division
(B-4)

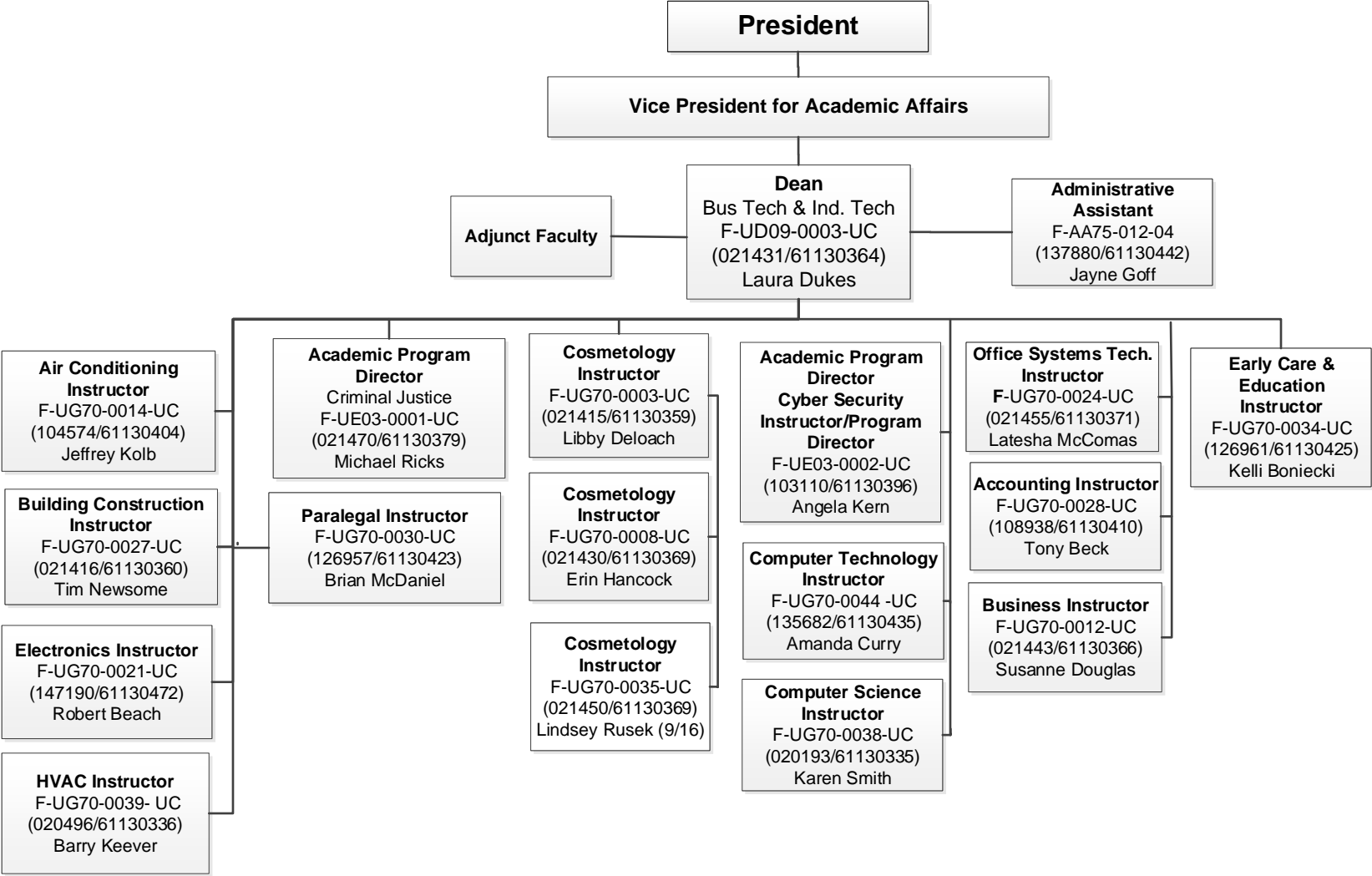


TECHNICAL COLLEGE OF THE LOWCOUNTRY
Arts & Sciences Division
(C-1)



*Positions are filled unless noted on all slides

TECHNICAL COLLEGE OF THE LOWCOUNTRY
Business Technology & Industrial Technology Division
(C-2)



TECHNICAL COLLEGE OF THE LOWCOUNTRY
Health Sciences Division
(C-3)

President

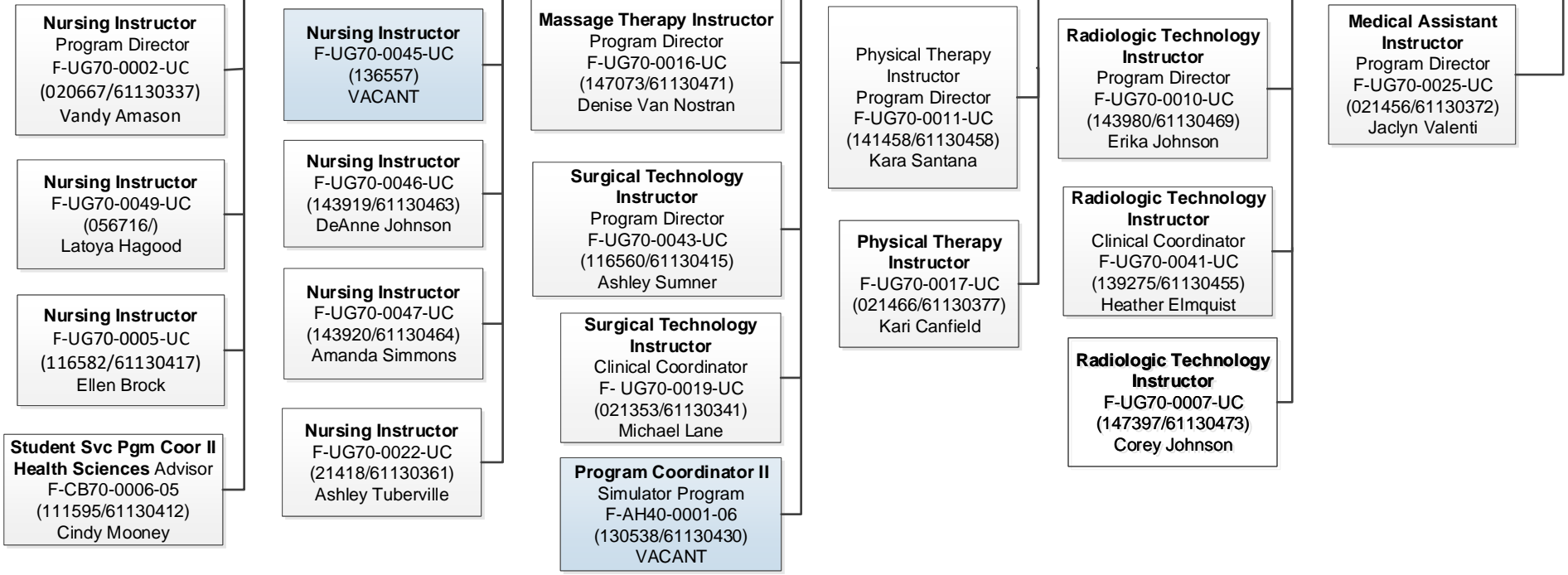
Vice President for Academic Affairs

Adjunct Faculty

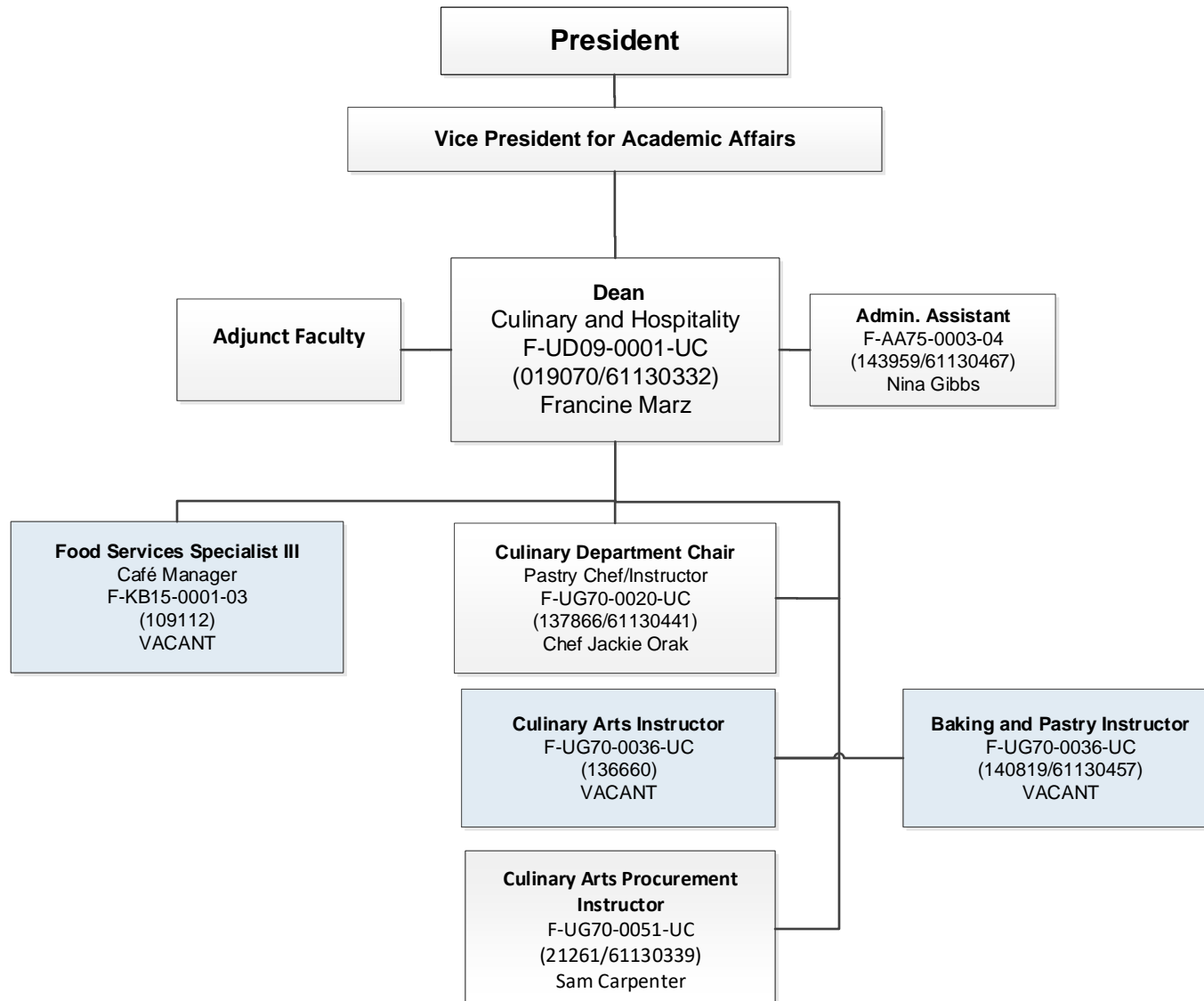
Dean
 Health Sciences Division
 F-UD09-0002-UC
 (102521/61130394)
 Joey Swearingen

Admin. Assistant
 F-AA75-0009-04
 (021354/61130342)
 LaQuetta Washington

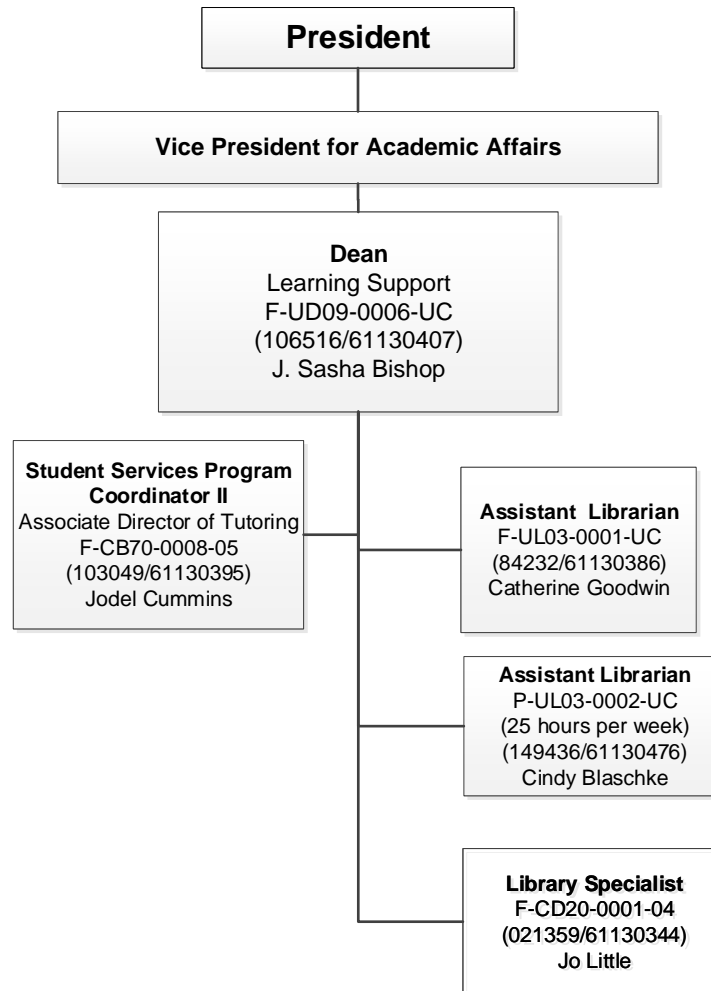
Admin. Spec. II
 F-AA50-0005-03
 (021457/61130373)
 Brenda Thompson



TECHNICAL COLLEGE OF THE LOWCOUNTRY
Culinary and Hospitality Division
(C-4)

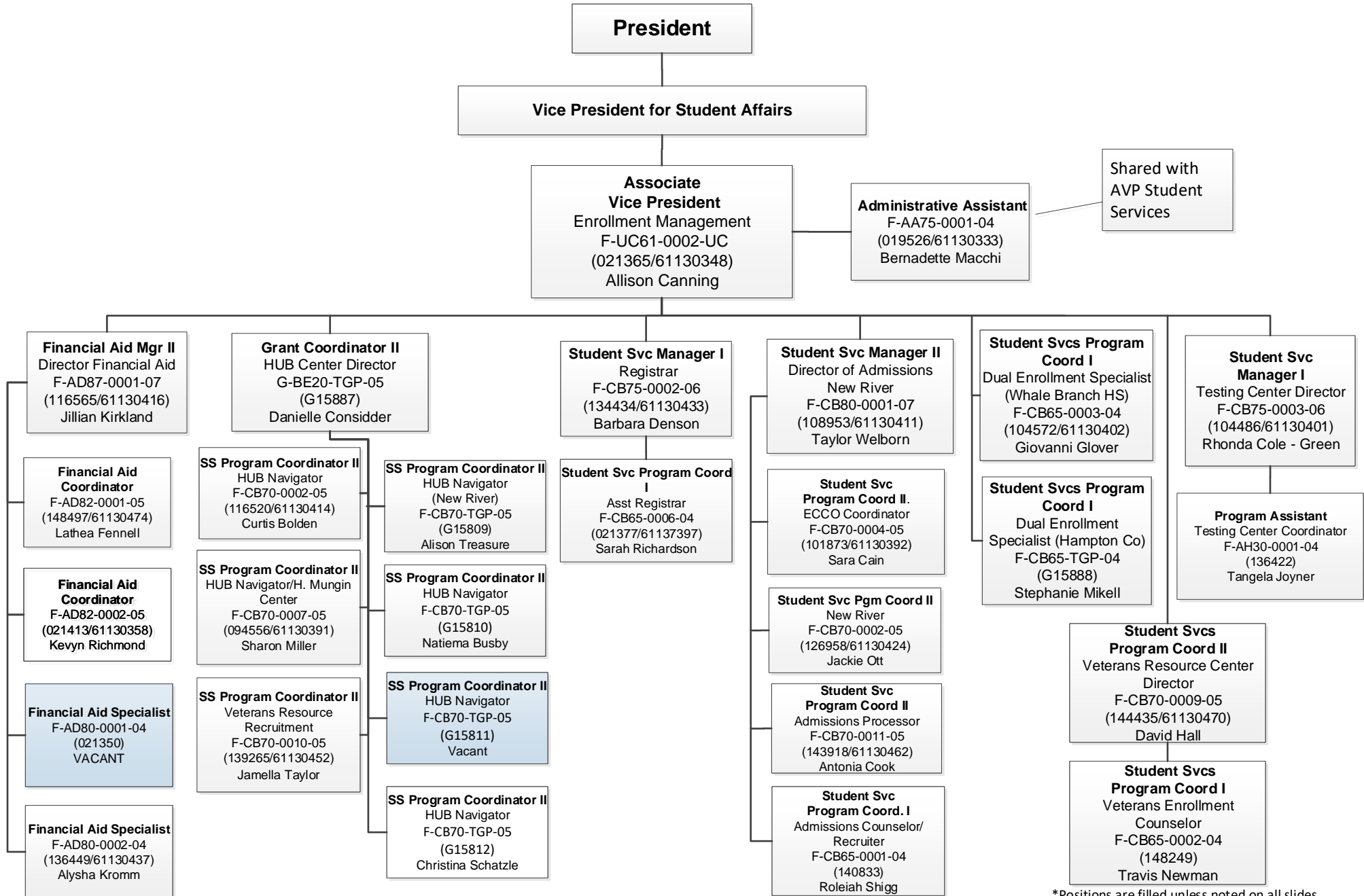


TECHNICAL COLLEGE OF THE LOWCOUNTRY
Learning Support Division
(C-5)



TECHNICAL COLLEGE OF THE LOWCOUNTRY

Enrollment Management Division (C-7)



*Positions are filled unless noted on all slides

TECHNICAL COLLEGE OF THE LOWCOUNTRY
Student Support Services Division
(C-8)

